



FLORIDA COUNCIL OF BROMELIAD SOCIETIES

Volume 42
Issue
November
2022



Neoregelia 'Mister Odean'





TABLE OF CONTENTS

2022 FCBS Officers & Members.....	3
I Love Bromeliad by Carol Wolfe, Editor.....	4
Signing Up by Mike McMahon.....	5
PH and Fertilizer Most Asked Questions by Tom Wolfe.....	7
Minutes of the FCBS Meeting by Greg Kolojeski.....	9
Bromeliad Extravaganza by Tom Ramiccio.....	11
Dennis Odean Head 1926 - 2022.....	12
Wally Berg Award by Rick & Carole Richtmyer.	13
Odean Head's Hybrids listed in the Bromeliad Cultivar Registry	14

PUBLICATION: This newsletter is published four times a year, February, May, August, and November, and is a publication of the Florida Council of Bromeliad Societies. Please submit your bromeliad related activities, articles, photographs, society shows, news and events of your society.

DEADLINES FOR ARTICLE SUBMISSIONS ARE:

January 15 for February issue

April 15th for May issue

July 15 for August issue

October 15th for November issue

COPYRIGHT: All materials contributed and published in this FCBS Newsletter are copyrighted and belong to the authors/photographers. The authors/photographer have given permission to use the materials and pictures in this publication for educational purposes. You may use any articles and/or pictures published in the FCBS Newsletter for educational purposes with the credit given to the authors and/or photographers. Commercial use of this material is prohibited but you may contact the authors/photographers directly for other permissions or material purchases.

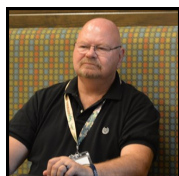
FCBS TAX DEDUCTIBLE RECEIPTS: The Florida Council of Bromeliad Societies, Inc. is a 501(c)3 Non-Profit Corporation, incorporated in the State of Florida. Please make your contributions for 2022 tax deductible receipts by going to FCBS.org to make online contributions through PayPal or mail check or money order to FCBS Treasurer: Sudi Hipsley, 6616 Tusawilla Drive, Leesburg, FL 34748-9190. If you have questions regarding your contribution, please call Sudi at 352 -504-6162.

FRONT COVER: Neoregelia 'Mister Odean' photo by Carol Wolfe





2022 FCBS OFFICERS & MEMBERS



Richard Poole
2022 Chairman
Florida West Coast
Bromeliad Society

2022 Secretary
Greg Kolejeski
Seminole Bromeliad & Tropical
Plant Society



Sandy Burnett
2022 Vice Chairman
Gainesville Bromeliad Society

Sudi Hipsley
2022 Treasurer
Seminole Bromeliad &
Tropical Plant Society



VOTING REPRESENTATIVES of the FCBS:

**Bromeliad and Tropical
Plant Society of Tampa**
Tom Wolfe & Carol Wolfe

Bromeliad Society of Central Florida
Mike Saunders &
Mike McMahon

Bromeliad Society of Palm Beaches
Tom Ramiccio &
Nick Bethmann

Bromeliad Society of South Florida
Michael Michalski & Patty Gonzalez

Caloosahatchee Bromeliad Society
Vicky Chirnside
Julie Stein

Florida East Coast Bromeliad Society
Calandra Thurrott & Jack Dunlop

Florida West Coast Bromeliad Society
Susan Sousa & Richard Poole

Gainesville Bromeliad Society
Sandy Burnett & Steven Provost

Sarasota Bromeliad Society
Marian Kennell
Jason Mellica

**Seminole Bromeliad &
Tropical Plant Society**
Sudi Hipsley & Greg Kolojeski

COMMITTEES MEMBERS:

*The following Committee Members and
guests have a standing invitation to FCBS
Meetings as Non-Voting Members unless
serving in the dual role of Member Society
Representative.*

Al Muzzel Weevil Fund:
Tom Wolfe, Chairman
Richard Poole, Nick Bethmann

FCBS Editorial Panel:
Carol Wolfe, Editor
Tom Wolfe, Assistant Editor
Calandra Thurrott, Copy Editor

FCBS Roster Maintenance:
Susan Sousa

FCBS Webmaster:
Michael Andreas, Webmaster@FCBS.org

BSI Officers from Florida:
Gregory Kolojeski, President
Barbara Partagas, Secretary

BSI Directors from Florida: Sandy Burnett,
Rick Ryals, Alex Bello Alan Herndon &
Richard Poole



I Love Bromeliads... by Carol Wolfe, Editor

Greetings to FCBS members and friends,

Fall is on its way and we have the first cooling down in Tampa to a beautiful 70 degree! How exciting after a long hot summer to feel the rain, low humidity and cool breezes! This is one of my favorite times of the year and especially growing up in North Carolina surrounded with vast amounts of beauty in the fall. My father's fields and pastures became picturesque when the leaves changed to various shades of yellow, burnt oranges, bright reds, deep auburns and rustic browns. The landscape transformed into a magnificent piece of art!

It was sad to learn that Odean Head of Houston, Texas passed away. We have listed Odean's forty-six (46) Neoregelia hybrids in this newsletter for you to enjoy. Our thanks to Geoff Lawn, BSI Cultivar Registrar, for providing a list of Odean Heads' hybrids. If you have pictures of any of his hybrids, please send them to Geoff and let's see how many pictures we can obtain to add to Odean's hybrids listed in the Cultivar Registry. I will continue to search my collections of pictures but the first two I found was Neo. 'Mister Odean' which I used on the front cover of this newsletter and Neo. 'Hattie Lou' named for Hattie Lou Smith. When Don Beadle was registrar, Odean sent him Neo. 'Roys Black Tips' to register but Don didn't think it was a suitable name for the beautiful plant so he named it 'Mister Odean' and registered it under that name! I took the picture of Neo. 'Hattie Lou' many years ago at Dr. Pepe and Sara Donayre's home in Hollywood, Florida. It is a beautiful plant and so well grown.

Odean wrote many articles on growing and caring for bromeliads. He was always gracious to allow me to reprint them in the BGTB Newsletter. His articles became a favorite of our members.

Odean and Betty, his wife, were both Bromeliad Judges and made many trips to Florida to judge bromeliad shows. That is how I got to know them. Every time they came to Florida, they loaded their van with bromeliads until there wasn't an inch of space left in the van. On one visit in the spring in the 1990's, the Heads brought Don Beadle and John and Nelwyn Anderson with them to Florida. We had a bad freeze in Lutz and the wind had ripped the greenhouse plastic and let the warm air out. Tom's mother had been sick and we did not have a chance to go through and clean out the greenhouse. That turned out to be a blessing because under the pale frozen plant leaves, they were tons of new pups. Odean, Don and John stayed for hours in the greenhouses seeing what jewels they could find under the frozen leaves. From their excitement and stories of what they found, you would have thought they had been on a safari collecting trip!

The Heads were great people to be around, pleasant, friendly, helpful and you didn't have to be around them very long until you felt like they were family! The naming of Odean's hybrids tells a lot about him. If you notice the names you will see that almost all his plants were named for family members, grandchildren, great grandchildren, and bromeliad friends. I think even in bromeliads, Odean put people first, as evidenced by the naming of his bromeliads.

Thanks to Mike McMahon for his great article, *Signing Up*! Mike is President of the Bromeliad Society of Central Florida and they have great meetings. When you walk into their meetings, it is a beehive of activity as everyone is doing their jobs. The membership serves a full meal, they hold workshops, auctions, raffles, share friendship plants and assist the speakers to set up for the program. Under Mike's leadership, all the events start on time, end on time, and it works like clockwork every month. If you haven't been to one of their meetings lately, it is worth the trip and time to see the club in action!

As always, my thanks to Calandra Thurrott, our copy editor, for her great job in proofing this document and to my husband, Tom who always comes through with an article. Special heartfelt thanks to Mike McMahon, Greg Kolojeski, Rick & Carole Richtmyer, Geoff Lawn, and the Bromeliad Cultivar Registry, for their contributions to this Newsletter! If you enjoyed their articles, let them know and maybe they will write some more in the future for us!



SIGNING UP

Mike McMahon Bromeliad Society of Central Florida

I spend much of my time as president of my bromeliad society searching for volunteers. Sometimes it seems easier to just do something myself, but then I wouldn't have time to get anything done right. I get enough wrong as it is. My mind goes in circles trying to figure out how to get folks to volunteer. A wandering mind can lead to bizarre places.

My clearest memory of being asked about volunteering was when I was in college. A friend told me he was going to volunteer and asked if I would also. I said, "No". I'd wait to be drafted. Every day I wasn't on my way to Vietnam was better than any day he would be having over there. "Our lottery numbers aren't that low. Maybe we'll get out of it." We agreed that we preferred somebody else do it. That's about how folks feel about volunteering for most anything. Maybe somebody else will do it.

But, you know, it's not like doing something for the bromeliad society means wading through rice paddies, watching for snakes, getting shot at, killing people or worse. Or, does it? Not literally maybe, but sometimes volunteering does seem like stepping into a swamp of uncertainty. The grunts in 'Nam were under-appreciated, too. And, sometimes you do get shot down.

When I was in high school I only volunteered to do stuff when I was asked and felt I had to do it. My senior year several students were needed to carry a long sign that said 'Homecoming' from one end of the football field to the other. It was made of brown paper that had come off a big roll stretching what seemed like half the width of the field. There were helium-filled balloons attached along the top. When we reached the end of the field we were to let go and the balloons would lift the sign up in the air over the field. That was the idea. It seemed silly to me. I wanted to be with my friends. But, the homecoming chair asked so nicely (begged, really), I couldn't say 'no'. So, I did it. There were a half dozen of us. We knew each other, but were not particularly friends. That walk down the field became a shared experience, especially when the balloon trick sort of fizzled. It lifted off and floated away, but some balloons tangled and you really couldn't read it. Stupid idea. We became friends over tangled balloons. We had insider 'balloon jokes' not repeatable here. A photo was taken of us holding the sign. When the yearbook was published in May, that photo got a full page. Suddenly everybody remembered the floating sign, and in their memory they could read it. That made it a cool thing to have done. Neat stuff holding a sign.

A couple of decades ago, I joined a koi club. I joined to learn, not to work. But, when volunteers were requested to help set up a show and a whole lot of folks raised their hands, I did too. I knew nothing about setting up a koi show, but with almost everyone volunteering, it seemed I should too. The difficulty came later. There was one fellow who kept barking orders at me. I was a newbie with a lot to learn, but it made me feel like back when I was a teenager



working construction one summer. I needed the money then, so I put up with a bossy boss. I didn't volunteer to get bossed and I sure wasn't getting paid. When the lunch break came, I made excuses and left. It was a couple of years (and after that guy was gone), before I helped out again. That time it was a friendly team. I enjoyed it.

People have gotten me to volunteer by asking me personally. I almost never raise my hand. I shouldn't be surprised other's don't either. Sometimes, I might be willing if only I knew what the job involved. I feel competent enough to hold a sign. Only so much can go wrong, right? But, if asked to be on a 'sign committee'? No way. That sounds like doing artwork and creating a design. Who knows what else? Signs can be a big deal. Some artistic people can get together to discuss the merits of what shade of blue the lettering should be. I figure whoever makes the sign can do what they want. I'll just hold it. If somebody prefers red, they can volunteer to do it next time.

Where was I? I need to figure out a way to get somebody to agree to take on a society task. It might help if I asked them... nicely and in person. Let them know I'm not going to boss them. And, it would be good to explain what was involved. People fear they'll do stuff wrong. A lot of the time what looks like a swamp turns out to be a puddle. And, what if something does go wrong? Does anyone really care that you ran out of purple and some letters are plum? Most times nobody notices; and if they do, an imperfect result is a whole lot better than a big zero. Some jobs really are big, but most are actually small. Really just a matter of lending a hand, and a lot of tasks can be made easy by just keeping it simple. The sign doesn't have to have a lot of artwork and fancy calligraphy. That stuff is great. Go for it. But, it's good enough if it just says what it needs to say.



In truth, most society tasks aren't all that important in themselves. They're the hum-drum organizational chores that are worth doing because they allow us to accomplish what is important. The important stuff is learning about bromeliads, sharing knowledge about them, introducing newbies to the shared addiction and creating opportunities to acquire them. Those are the important things. But, you know, to get those things done, sometimes somebody has to decide between orange and apricot. And, sometimes, you just need somebody to hold that sign.



PH and Fertilizer Most Asked Questions

By Tom Wolfe

1. What is PH?

PH is a measure of soil acidity (sourness) or soil alkalinity (sweetness). A number expressed PH on a scale from 0 to 14 with 7 being neutral. Any reading below 7 represents an acid soil and the lower the number the more acidic the soil. Also any number above 7 indicates an alkaline condition. As the number increase the alkalinity increases.

2. What is the best PH?

The optimum PH will vary from plant to plant or from tree to tree or grasses to shrubs but a PH between 5.0 to 7.0 is the best range for most plants.

The PH of the soil governs what nutrients are available to plants. If the soil PH is above or below the recommended range (5.0 to 7.0) nutrients may not be soluble (absorbable by plants) or they may be so soluble that they become toxic. Therefore, a plant can show signs of nutrient deficiencies or toxicity even when the correct amount of fertilizer is applied.

3. When should soil be limed?

Lime is added to soil when a soil test determines that the soil PH is too acid. Lime reacts with water and releases calcium that neutralizes the acidity of the soil, therefore raising the PH of the soil.

4. How does dolomite differ from lime?

Dolomite is a type of lime. There are various forms of lime used to increase soil PH. Standard lime contains calcium, Dolomitic lime contains calcium and magnesium. Whenever lime is recommended, dolomite is suggested since it will adjust the soil PH and also add magnesium that is usually deficient in Florida's sandy soil.

5. Soil is too alkaline (sweet or basic). How can I lower the PH?

Alkaline soils are a result of natural soil characteristics or excessive applications of lime. The PH of our limed soils can be lowered by adding elemental sulfur. It is recommended never apply more than 5 to 10 pounds of sulfur per 1000 square feet per application. Iron sulfate, aluminum sulfate or ammonium sulfate also has soil acidifying properties.

Most of Florida is supported by a layer of lime rock which tends to cause the soil to be alkaline, especially along coastal areas. However in lower lands near rivers, swamps and lakes, the soil can be very rich with organic matter which is acidic. Some of the South Florida farm lands is so acidic (rich with organic matter) that it catches fire during some of the very hot summer days.

Nutrient foliar sprays should be used to treat nutrient deficiencies in plants growing on calcareous soils or on plants that are adopted to coastal conditions.



6. How do you prepare for soil testing PH?

Use a trowel or shovel to dig a v-shaped hole in the soil four to six inches deep. Remove the entire soil wedge then collect similar wedges from several other spots in the area you plan to plant. Mix all of them together thoroughly, then remove one pint and dry it out. Remove all debris and rocks. This sample is ready for testing.

7. What will a soil PH test tell me?

The soil PH test will tell you how acidic or alkaline your soil is. It will not tell you what fertilizers to use or what diseases are in your soil.

If you don't have a PH testing kit and you want an accurate test, you can send the sample to University of Florida's soil testing laboratory in Gainesville, Florida. They will tell you the PH but also will recommend phosphorus, potassium, magnesium and calcium. Nitrogen is not measured. Forms for this are available from your county Extension Service. Also you can take your sample to Thornton Laboratories on Cass Street in Tampa. They can run a complete analysis for a price.

8. What is the best type of fertilizer?

This of course depends on the type of plant and the season of the year. The numbers on the bag (6-6-6, 10-10-10, 16-4-8, etc.) represent the percentage of nitrogen, phosphorous and potassium (potash). It is also advantageous for the fertilizer to contain trace elements (micronutrients) such as iron, manganese, sulfur, etc. These nutrients are listed on the label as secondary plant nutrients. For best results find one that contains long lasting and/or slow-release nutrients.

9. What does 100% organic mean?

When the term 'organic' is used on a fertilizer label it means that all or part of the nitrogen is in an organic form. This form must be identified as synthetic-organic and/or natural organic and the percentage of each must be listed. As an example: 70% synthetic, 30% natural.

10. What are synthetic organics?

Synthetic organics are organic compounds which are chemically synthesized such as urea nitrogen. Synthetic organic nitrogen is identified in the guaranteed analysis as water soluble organic nitrogen and/or urea nitrogen. Natural organic nitrogen come from natural sources such as manure, seed meal, drudge, dried blood, etc. The percentage of natural organic material is listed under water insoluble nitrogen.





Note: Draft Minutes of the Florida Council of Bromeliad Societies may be corrected or approved at the next meeting, February 2023.

Florida Council of Bromeliad Societies
MINUTES OF THE FLORIDA COUNCIL OF BROMELIAD SOCIETIES MEETING
-Saturday, October 22, 2022

Opening: Chairman Richard Poole called the meeting to order at 1:10 PM at Greg Kolojeski's house in Winter Springs.

FCBS Member Representatives Present: Bromeliad & Tropical Plant Society of Tampa: Carol and Tom Wolfe (with guests Marilyn and Steve Byram); Bromeliad Society of Central Florida: Mike McMahon and Mike Saunders; Bromeliad Society of the Palm Beaches: Tom Ramiccio (by phone); Caloosahatchee Bromeliad Society: Vicky Chirnside; Florida East Coast Bromeliad Society: Jack Dunlop and Calandra Thurrott; Florida West Coast Bromeliad Society: Susan Sousa and Richard Poole; Gainesville Bromeliad Society: Sandy Burnett and Steve Provost; Sarasota Bromeliad Society: Marian and Mark Kennell; Seminole Bromeliad and Tropical Plant Society: Sudi Hipsley and Greg Kolojeski.

Officers Reports

Secretary: Minutes of June 2022 meeting were presented by Richard Poole. A motion by Mike Saunders and Susan Sousa to accept and approve them was passed by unanimous vote.

Treasurer Report: Sudi Hipsley submitted the Treasurer's report. Greg Kolojeski started a discussion of investment options noting that interest rates had risen substantially in recent months. After discussion, the purchase of a \$10,000 Series I Savings Bond paying 9.62% for the next six months was passed unanimously after a motion by Susan Sousa and Mike Saunders. Purchase of a \$10,000 26-week Treasury Bill was passed unanimously after a motion by Mike Saunders and Tom Ramiccio.

Committee Reports

Webmaster Report: Michael Andreas submitted his written report.

Newsletter Report: Carol Wolfe mentioned that the desirability of having an image on the FCBS website that loads the current newsletter with one-click be suggested to the webmaster. Carol also suggested that the November newsletter no longer be published after this year. Carol also suggested that preliminary minutes be used to provide more timely information for inclusion in the newsletter.

Weevil Committee: Tom Wolfe noted that Weevil Committee activities were on hold due



Left: Calandra Thurrott
representing FECBS
Susan Sousa
representing FWCBS
Greg Kolojeski
representing SBTPS

Right: Steven Provost,
GBS & Tom Wolfe, BTPST





Sandy Burnett
representing GBS

Greg and Ronnie,
host for the
FCBS meeting,
giving bromeliad
tours to Marian
and Mark Ken-
nell from Sara-
sota Bromeliad
Society



FCBS Roster: Susan Sousa noted that members' email addresses needed be updated by the various bromeliad societies since she had found that many of them were out-of-date. It was noted that the next roster should have the new name recently adopted by the Tampa society which is now known as the Bromeliad & Tropical Plant Society of Tampa. There was a discussion of whether it makes sense to print 650 copies of the Roster when only a handful of society members seem to use the printed Roster. Discussion centered around the idea of providing a PDF copy of the Roster with only a small number of printed copies provided to each society. Further consideration of that idea was postponed to the next meeting.

Facebook page: Greg Kolojeski noted that the Facebook page was continuing to get an expanded number of followers. The Facebook page is primarily used to publicize plant sales and shows by FCBS societies.



Judges School: Vicky Chirnside reported that the planned November judges school was cancelled due to the effects of Hurricane Ian. An alternate date in January or February is being considered.

Archives: Steve Provost noted that the library holding the FCBS archival material had a new person responsible for cataloging.

Greg Kolojeske home tour
Photos by Calandra Thurrott





Extravaganza 2023: Tom Ramiccio reviewed the plans for the next extravaganza which will be held at a Marriott Hotel near downtown Palm Beach with a rate of \$139 including parking. Detailed information will be posted online in early November. The registration fee will be \$149 including the reception, early plant sale access, and the banquet with a speaker line-up of Chester Skotak, Eloise Beach, and David Shiigi. Discussion ensued about the FCBS paying speaker expenses. A vote was taken to waive the FCBS standing rule limiting reimbursement of such expenses to \$1,000 and it passed unanimously. Then a motion to reimburse speaker expenses of \$2,250 (\$250 for Eloise Beach and \$1,000 each for Chester Skotak and David Shiigi) was made by Mike McMahon and Steve Provost and passed unanimously.

BSI Report: Greg Kolojeski noted the World Bromeliad Conference 2022 that was held in Sarasota in June was successful on all levels due to the incredible efforts of the many chairpersons and volunteers. It was also profitable with almost \$10,000 paid to the sponsoring Sarasota Bromeliad Society.

New Business: A discussion of the possibility of limiting the financial liability of sponsoring societies for future Extravaganzas was opened by Greg Kolojeski. No specific proposals were made after a short discussion and the topic was closed.

Society News: Each of the societies with reps in attendance reviewed their recent speakers and events.

Motion to Adjourn: A motion to adjourn was made and approved with the meeting adjourned at 3:30 PM.

Respectfully submitted by Greg Kolojeski.

FCBS & Bromeliad Society of the Palm Beaches
Invites you to the:
BROMELIAD EXTRAVAGANZA

SAVE THE DATE

West Palm Beach Marriott
1001 Okeechobee Blvd
West Palm Beach FL 33401

Hotel reservations:
www.marriott.com

Conference registration:
www.FCBSextravaganza.org



PLANT SALES
AUCTION
SPEAKERS
FUN FUN FUN



Dennis Odean Head
March 22, 1926 — September 30, 2022

We are sad to announce that on September 30, 2022, at the age of 96, Dennis Odean Head (Houston, Texas) passed away. He is survived by his daughters, Denise Ann (Jeff) and Terre (Herb); his 6 grandchildren, and his 4 great grandchildren, and numerous nieces and nephews.

After he graduated from Brownwood High School, he enlisted in the Army Air Corp during World War II. After the war, he owned and operated Head Bowlanes in Arlington with his two brothers. During this time, he met Betty Jo Wynn and they were married June 21, 1951. Their early married life was very full as they continued to bowl whenever they could. Odean attended Texas Christian University in Ft. Worth and during this time, they started their family. He was still attending TCU at night, when he went to work for Texaco, Inc. in 1952. He completed his degree before he was transferred to Midland in 1958.

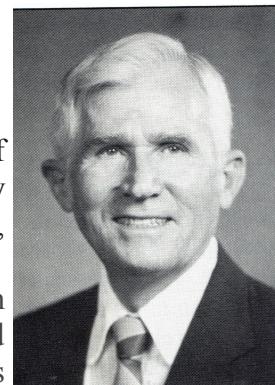
Before they left Ft. Worth, their first two children were born: Denise Ann and Teresa Jo. Once in Midland, their third child, Larry Wynn, was born. Many lifetime friendships were formed in Midland as they continued to bowl and play bridge. In 1963, Odean was transferred to Houston where he and Betty would spend the rest of their lives. Again, their time was full of bowling, bridge, friends, and they were very active in Gethsemane United Methodist Church. Always an avid gardener, Odean was introduced by close friends to the passion of his life, bromeliads. He became well known in the bromeliad world as a grower, hybridizer, judge, and an overall promoter of the species. He and Betty found a community in the Bromeliad Society of Houston and traveled the world collecting bromeliads and friends.

He did many workshops and garden club presentations over the years to expand knowledge of the plants he loved. There are many people across the country who learned to grow and appreciate the beauty of bromeliads because of Odean.

He was proud to have friends around the world who shared his passion for bromeliads, and he received many awards throughout the years. He was especially proud to receive the prestigious Wally Berg Award of Excellence in 2016. Odean honored most of his family by creating new bromeliad hybrids and naming them after his loved ones.



Neoregelia
'Mister
Odean'
Photo: Carol
Wolfe



Betty and Odean Head, always with smiles on their faces. The Heads were great people to be around, pleasant, friendly, helpful and you didn't have to be around them very long until you felt like they were family!



Excerpts from Odean's nomination for the

Wally Berg Award in 2016
By Rick and Carole Richtmyer

Odean joined Bromeliad Society/Houston in 1974 and served the society in many ways. He was elected President for 2 terms, Vice President for 2 terms, Treasurer, and Director for 2 terms. He served as Co-Chairman of the Bromeliad Society International World Conference in 1998 when the Bromeliad Society/Houston hosted the event. Odean served as a Director to the Bromeliad Society International for 3 years, then was elected President and served for 3 years.

Throughout the years, Odean accumulated and maintained an outstanding collection of award winning bromeliads which he has always been willing to show and generously share. Because of his special love for Neoregelias, he created many Neo hybrids and registered 46 of them. Neoregelia 'Betty Head', named for his wife, has been used extensively in the creation of many additional Neo hybrids. Odean's informative 'Cultural Tips' articles have appeared not only in the Bromeliad Society/Houston Bulletin for many years but he has also had articles published in the Journal Of The Bromeliad Society and bulletins of other societies throughout the world. Another of Odean's major contributions is the programs he has presented to BS/H, BSI World Conferences, other bromeliad societies, plant groups and garden clubs. These programs have generated interest in bromeliads throughout the world. He has also traveled extensively in his duties as a BSI Master Accredited Judge.



In 2014, Rick Richtmyer, on behalf of BS/H, presented the first Bromeliad Society/Houston Lifetime achievement Award to Odean Head at the South-west Bromeliad Guild Show Banquet on October 25.

The Board of Directors voted unanimously to give the award to Odean for his many years of service to BS/H, BSI and many local garden clubs, to recognize his programs, hybridizing and education efforts promoting bromeliads.





ODEAN HEADS' HYBRIDS LISTED IN THE BROMELIAD CULTIVAR REGISTRY AND USED BY PERMISSION

NEOREGELIA 'Allyn Pearlman'

Head, O.

1984

cv. of 'Painted Lady' (F-2) - Odean Head said, "Medium sized plant w/more leaves narrower than those of 'Painted

Seed Parent: **Painted Lady**Pollen Parent: **Painted Lady** OdeanHead1998**NEOREGELIA 'Angela Espinosa'**

Head, O.

1986

cv. of 'Roy' X farinosa - (Other cv. = 'Russell Lively') - Odean Head said, "Small rosette w/both leaf surfaces copper colored and spotted sporadically w/darker wine-red spots - leaf margins darker than body of blade especially toward the tips - leaf tips w/scarlet fingernails".

Seed Parent: **Roy**Pollen Parent: **farinose**

OdeanHead1998

NEOREGELIA 'Betty Head'

Head, O.

1989

cv. of 'Red On Green' (F-2) - Small symmetrical rosette with 10+ glossy apple-green leaves and heavy spotting and splotching in tomato red - upright tips and minutely red spines.

Pollen Parent: **'Red on Green'**Seed Parent: **'Red on Green'**

OdeanHead 1990, PineapplePI 96

Top Right Photo: of 'Betty Head'

Photo by Dennis Cathcart,

Tropiflora Nursery

Photo Bottom Right of 'Betty Head':

Photo by Carolyn Clark

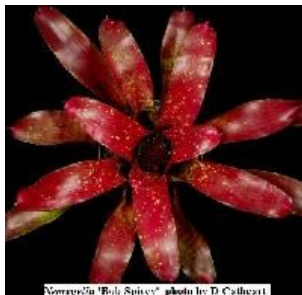


Photo: Dennis Cathcart

NEOREGELIA 'Bob Spivey'

Head, O.

1980

cv. of 'Red On Green' (F-2) - (Other cv. = 'Rod French') - Odean Head said, "Medium sized plant w/orange fingernails - young and mature plants mottled orange-red - mottling fades w/age and decline but is renewed in offsets".

Seed Parent: **Red on Green**Pollen Parent: **Red on Green**
OdeanHead1998**NEOREGELIA 'Cade & Wendy'**

Davis, T., Head, O.*

1979

cv. of 'Catherine Wilson' hybrid - Odean Head said, "Medium sized well formed rosette - lavender-red tips and large lavender-red splotches on upper leaves".

Seed Parent: **Catherine Wilson hybrid**

OdeanHead1998

NEOREGELIA 'Dorothy Berg'

Head, O.

1983

cv. of Many Moods (F-2) - (Other cvs. = 'LeRae' & 'Natalie') - Odean Head said, "Medium rosette w/tops of leaves green w/extended purple leaf tips and narrow purple edges - balance of leaf striated and mottled w/purple markings - Spines purple - at anthesis the leaf bases turn reddish-purple contrasting w/the purple leaf tips - underleaf green w/ narrow purple border - lavender flowers w/whitish margins emerging from lime-green floral bracts".

Seed Parent: **Many Moods**Pollen Parent: **Many Moods**

OdeanHead1998



NEOREGELIA 'Charlien Rose'

Head, O.

1987

cv. of (kautskyi X pauciflora) (F-2) - Odean Head said, "Small to medium rosette w/somewhat narrow leaves terminating in burgundy tips - burgundy spines - plant becomes yellowish when in good light - some small spotting".

Seed Parent: **kautskyi x pauciflora**

Pollen Parent: **kautskyi x Pauciflora** OdeanHead1998

NEOREGELIA 'Chet Blackburn'

Head, O.

1989

cv. of (johannis(?) x carcharodon) (F-2) - Odean Head said, "Large broad leafed rosette of apple-green leaves with a pronounced purplish margin and dark spines - leaf tips dark and indented - some interrupted purple mottling and banding in darker tones".

Seed Parent: **johannis x carcharodon**

Pollen Parent: **johannis x carcharodon**
OdeanHead1998

NEOREGELIA 'Chief Jackson'

Head, O.

1983

cv. of (johannis(?) x carcharodon) X concentrica 'Belissima' - (Other cv. = 'Crystal Jackson') - Odean Head said, "Medium sized plant w/broad leaves, dark spines and burgundy to blackish-purple leaf tips - some purple spotting toward the leaf tips".

Seed Parent: **johannis x carcharodon**

Pollen Parent: **Belissima**

OdeanHead1998

NEOREGELIA 'Crystal Jackson'

Head, O.

1983

cv. of (johannis(?) x carcharodon) X concentrica 'Belissima' - (Other cv. = 'Chief Jackson') - Odean Head said, "Medium sized rosette of green leaves w/burgundy tips - similar to 'Chief Jackson' but more heavily spotted in purple and w/less prominent spines".

Seed Parent: **johannis x carcharodon**

Pollen Parent: **Belissima**

OdeanHead1998



NEOREGELIA 'Denise Lively'

Head, O.

1979

cv. of 'Takemura Princeps' (F-2) - (Other cv. = 'Terre Espinosa') - Odean Head said, "Medium sized rosette - foliage, especially newer leaves, lavender-purplish tinged w/darker purplish blotching - dark blackish-purple tips - unevenly distributed small spines w/leaves becoming entire near bases". Takemura Group

Seed Parent: **'Takemura Princeps'**

Pollen Parent: **'Takemura Princeps'**

OdeanHead1998

NEOREGELIA 'Don Beadle'

Head, O.

1985

cv. of 'Roy' X olens 'Marie' - Odean Head said, "Small compact many leafed flared bulbous rosette 8" across and 10" high in bright glossy green w/heavy wide red concentric banding and spotting in newer leaves - red spines and strawberry red tips".

Seed Parent: **'Roy'**

Pollen Parent: **olens 'Marie'**

OdeanHead1998



NEOREGELIA 'Ellen B.'

Head, O.

<1998

cv. of 'Avalon' X 'Fireball' - Odean Head said, "Small to medium sized plant w/very red shiny leaves w/some green spotting in good light and burgundy red w/green spotting at the base becoming dark green toward the tips - lighter red tips - stoloniferous habit like 'Fireball' - looks like a larger 'Fireball' ". Country of origin: **Texas, USA**

Seed Parent: **'Avalon'**

Pollen Parent: **'Fireball'**

**NEOREGELIA 'Fire 901'**

Head, O.

<1991

cv. of 'Meyendorffii' in a compact symmetrical tiered form - solid bright red coloration.

Seed Parent: **Meyendorffii**

OdeanHead 1991

NEOREGELIA 'Hattie Lou'

Head, O.

<1984

cv. of 'Roy' (F-2) - (Other cv. = 'Mister Odean') - Medium to large wide leafed upright rosette in a high gloss clear red w/slightly darker areas - unique once observed - lighter red tips w/red extending along edges".

Seed Parent: **'Roy'**PollenParent: **'Roy'**

OdeanHead1998

NEOREGELIA 'Head's Pinkie'

Head, O.

1983

(Other cvs. = 'Louie', 'Peggy B.' & 'Nick Espinosa') - Odean Head said, "Small upright plant resembling the cyanea parent - foliage is pinkish-red in bright light - spines and tips are red also but not so much as cyanea". Originally in Register as 'Pinkie' but name amended to differentiate from the other 'Pinkie'.

Seed Parent: **cyanea**Pollen Parent: **concentrica**

OdeanHead 1998



Neoregelia Herbie Espinosa - photo by Tom Tarver

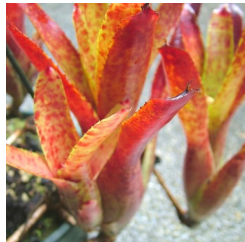
NEOREGELIA 'Herbie Espinosa' Head, O.

1993

cv. of 'Betty Head' X 'Rio Ocher' - (Other cv. = 'Jeff Lively') - Odean Head said, "Small to medium green rosette w/purple leaf margins culminating in blackish-purple leaf tips - scattered banding, spotting and mottling - underleaf w/darker markings that disappear w/age".

Seed Parent: **'Betty Head'**Pollen Parent: **'Rio Ocher'** OdeanHead1998

Photo by Tom Tarver

**NEOREGELIA 'Head's Rose Marie'** Head, O.

1979

cv. of 'First Prize' (F-2) - Odean Head said, "Medium sized rosette in red w/yellow-green banding and mottling on both surfaces - mottling fades in older leaves". Originally in Register as 'Rose Marie' but name amended to differentiate from the other 'Rose Marie'.

Seed Parent: **'First Prize'**Pollen Parent: **'First Prize'**

OdeanHead1998

Photo by Peter Waters

NEOREGELIA 'Jeff Lively'

Head, O.

1993

cv. of 'Betty Head' X 'Rio Ocher' - (Other cv. = 'Herbie Espinosa') - Odean Head said, "Small to medium rosette w/ unique undulating foliage - leaves primarily green w/reddish tinges and light spotting - small red tips".

Seed Parent: **Betty Head**Pollen Parent: **Rio Ocher**

OdeanHead1998

NEOREGELIA 'John Anderson'

Head, Odean

<1997

cv. of (concentrica X melanodonta) (F-2) - Odean Head said, "Large concentrica type rosette w/unique dark red-maroon markings - indented apiculate leaf tips".

OdeanHead199

Seed Parent: **concentrica x melanodonta**Pollen Parent: **concentrica x melanodonta****NEOREGELIA 'Larry Head'**

Head, O.

1981

cv. of 'White Johannis' (F-2) - Odean Head said, "Medium to large plant w/purplish foliage throughout deepening toward the base - leaves mottled w/darker purple and green - leaf edges purplish w/dark spines - darker leaf tips".

Seed Parent: **White Johannis**Pollen Parent: **White Johannis**

OdeanHead1998

**NEOREGELIA 'LeRae'** Head, O.

1983

cv. of Many Moods (F-2) - (Other cvs. = 'Dorothy Berg' & 'Natalie') - Odean Head said, "Medium sized rosette w/ glossy apple-green leaves having prominent red tips".

Seed Parent: **Many Moods**Pollen Parent: **Many Moods**

OdeanHead1998

NEOREGELIA 'Louie'

Head, O.

1983

cv. of cyanea X concentrica - (Other cvs. = 'Nick Espinosa', 'Peggy B.' & 'Pinkie') - Odean Head said, "Small upright plant with cyanea form - green leaves w/a few inconspicuous burgundy markings - very burgundy-red leaf tips and spines".

Seed Parent: **cyanea**Pollen Parent: **concentrica**

OdeanHead1998

NEOREGELIA 'Maggie'

Head, O.

1989

Odean Head said, "Medium sized plant w/strawberry tips - purplish red to strawberry red w/prominent green splotches in good light - in lower light conditions the color patterns reverse w/the green color predominating - bluish purple flowers w/strawberry red bracts".

Seed Parent: **Michelle**Pollen Parent: **Michelle**

OdeanHead1998

NEOREGELIA 'Marcy Head'

Head, O.

1985

cv. of 'Amethystine' (F-2) - Odean Head said, "Medium sized rosette of green leaves diffused w/a pinkish purple tinge - purple margins broadening toward the tips - small spotting scattered - more purplish glazing in the newer leaves".

Seed Parent: **Amethystine**Pollen Parent: **Amethystine**

OdeanHead1998

**NEOREGELIA 'Melissa Lively'** Head, O.

1985

cv. of ('Avalon' X concentrica) (F-2) - (Other cv. = 'Sarah Head') - Odean Head said, "Medium sized plant w/shiny red foliage having a few scattered green markings - small red tips".

Seed Parent: **'Avalon' x concentrica**Pollen Parent: **'Avalon' x concentrica**

Photo by Dennis Cathcart

NEOREGELIA 'Merrill O'Neal'

Head, O.

1986

cv. of 'Stormy Weather' (F-2) - Odean Head said, "Medium sized plant w/dark purplish-red foliage especially toward the tips - dark purple-brown fingernails - leaves have dark spotting on top surface and faint banding on underleaf - dark spines".

Seed Parent: **Stormy Weather**Pollen Parent: **Stormy Weather**

OdeanHead1998

NEOREGELIA 'Mister Eldean'

Head, O.

1982

cv. of Many Moods X 'Green Apple' - Odean Head said, "Medium sized plant w/broad glossy green leaves culminating in very large and prominent red fingernails - the tips are scarlet becoming burgundy colored at the base of the tips - younger foliage is pinkish-green and mottled lightly w/darker green - named for the hybridizers twin brother".

Seed Parent: **Many Moods**Pollen Parent: **Green Apple****NEOREGELIA 'Mister Odean'**

Head, O. (Beadle,D.*)

1984

cv. of 'Roy' (F-2) - (Other cv. = 'Hattie Lou') - Originally known as 'Black Tips' - Medium broad leafed rosette w/12-20 leaves in a most remarkable and unique cranberry-butterscotch coloration w/deep black bordered leaf tips.

Seed Parent: **'Roy'**Pollen Parent: **'Roy'**

OdeanHead1998

**NEOREGELIA 'Mollie Sheffield'**

Head, O.

1979

cv. of 'Sanguine Knight' (F-2) - Odean Head said, "Small to medium rosette in bright red w/smattering of green spots in good light - In lower light the base of the plant is green w/more abundant green mottling in the red upper portion - symmetrical stacked appearance".

Seed Parent: **Sanguine Knight**Pollen Parent: **Sanguine Knight**

OdeanHead1998

NEOREGELIA 'Natalie'

Head, O.

1983

cv. of Many Moods (F-2) - (Other cvs. = 'Dorothy Berg' & 'LeRae') - Odean Head said, "Medium to large plant w/ newer growth lavender red w/extensive mottling in green - older growth red on outer half and green toward the base".

Seed Parent: **Many Moods**Pollen Parent: **Many Moods**

OdeanHead1998

NEOREGELIA 'Nelwyn'

Head, O.

1979

cv. of 'Oeser's Chlorosticta #5' (F-2) - Odean Head said, "Medium sized plant w/narrow leaves widest near the middle - orange red foliage in good light w/some green spotting - most mottling underleaf" - Named for Nelwyn Anderson, Corpus Christi, TX - Grower of fine Cryptanthus and other select bromeliads.

Seed Parent: **'Oeser's Chlorosticta #5'**Pollen Parent: **'Oeser's Chlorosticta #5'**

OdeanHead1998

NEOREGELIA 'Nick Espinosa'

Head, O.

1983

cv. of cyanea X concentrica - (Other cvs. = 'Peggy B.', 'Pinkie' & 'Louie') - Odean Head said, "Small upright plant w/shiny wine-red foliage exhibiting green mottling especially on the younger leaves - underleaf faintly banded and not so shiny".

Seed Parent: **cyanea**;Pollen Parent: **concentrica** Odean Head1998

Photo: Dennis Cathcart
Tropiflora Nursery

**NEOREGELIA 'Peggy B.'**

Head, O.

1983

cv. of cyanea X concentrica - (Other cvs. = 'Nick Espinosa', 'Pinkie' & 'Louie') - Odean Head said, "Small upright plant w thick leathery leaves green at the base and increasingly purple-red toward the tips which are blackish-purple - spines are burgundy".

Seed Parent: **cyanea**Pollen Parent: **concentrica**

OdeanHead1998

**NEOREGELIA 'Rachel Head'**

Coleman R, Head O*

2007

Mature rosette to 35cms. diameter x 22cms. high. Leaf width 3cms. Bluish white flowers. Named by Odean Head in honour of his grand-daughter. Reg. Doc. 9/2011 by Dennis Cathcart Country of origin: **Florida USA**

Seed Parent: **Rafa**Pollen Parent: **Betty Head**

Tropiflora code #7831. Clone of RC070 Photo by Dennis Cathcart

NEOREGELIA 'Red Peach'

Head, O.

1980

cv. of (carolinae X johannis) (F2)

Seed Parent: **carolinae x johannis**Pollen Parent: **carolinae x johannis**

OdeanHead 1991

NEOREGELIA 'Rod French'

Head, O.

1980

cv. of 'Red On Green' (F-2) - (Other cv. = 'Bob Spivey') - Odean Head said, "Rosette in darkish reddish green marked by wine-red spots especially toward the base - brownish-red fingernails - lower leaf surface discolored in reddish w/ wine red spots and faintly striated".

Seed Parent: **Red on Green**Pollen Parent: **Red on Green**

OdeanHead1998

NEOREGELIA 'Rosa's Pride'

Meilleur, C. (Head, O.*)

1981

cv. of ('Empressa' x 'Fireball') X 'Pepper' - Odean Head said, "Small stoloniferous rosettes w/red leaf tips and spots".

Seed Parent: **Empressa x Fireball**Pollen Parent: **Pepper**

OdeanHead1998

**NEOREGELIA 'Rosy Aztec'**

Head, O.

<1991

cv. of 'Aztec' (F-2)

Seed Parent: 'Aztec'

Pollen Parent: 'Aztec'

NEOREGELIA 'Russell Lively' Head, O.

1986

cv. of 'Roy' X *farinosa* - (Other cv. = "Angela Espinosa") - Odean Head said, "Medium to large upright rosette of many broad leaves - wine colored w/some random darker spots - leaf tips slightly darker - leaf bases fading green especially in older foliage".

OdeanHead1998

Seed & Pollen Parent: Roy

Photo: Dennis Cathcart
Tropiflora Nursery

**NEOREGELIA 'Sarah'**

Meilleur, C. (Head, O.*)

1981

Odean Head said, "Small stoloniferous upright rosette w/a flush of light lavender mottling".

Seed Parent: **Strawberry Roan**Pollen Parent: **tigrina**

OdeanHead1998



Photo Diana Holt

NEOREGELIA 'Sarah Head'

Head, O.

1985

cv. of ('Avalon' x *concentrica*) (F-2) - (Other cv. = 'Melissa Lively') - Odean Head said, "Does not resemble the parentage - Small size (12cms. tall x 10cms. wide) and stoloniferous habit more reminiscent of 'Fire Ball' - Small, stoloniferous w/shiny wine-red pointed outer leaves mottled w/green on both surfaces - mottling not completely through the leaf". Inner leaves have rounded tips.

Country of origin: **Texas USA**Seed Parent: 'Avalon' x *concentrica*

Pollen Parent: 'Avalon' x *concentrica*
OdeanHead1998

NEOREGELIA 'Terre Espinosa'

Head, O.

1979

cv. of 'Takemura Princeps' (F-2) - (Other cv. = 'Denise Lively') - Odean Head said, "Medium sized plant - foliage tinged purplish throughout masking the green which is also present - upper surface mottled purple - broad purple tips - faint banding below".

Seed Parent: **Takemura Princeps**Pollen Parent: **Takemura Princeps**

OdeanHead1998

**NEOREGELIA 'Wally Berg'**

Head O.

1985

Odean Head said, "Medium sized rosette - leaves have a pink-yellow tinge w/some mottling and large burgundy spotting - reddish-purple fingernails paler at their base".

Country of origin: **Texas, U.S.A.**Seed Parent: **Rio Ochre**Pollen Parent: **Roy**

OdeanHead1998

Photo: Dennis & Linda Cathcart, Tropiflora

NEOREGELIA 'White Johannis'

Odean Head

<1991

cv. of *johannis* X ?? - (Probably not made using the true species *johannis*) - Medium large rosette w/light green leaves concealed by plum and black purple bands, blushes and spots.

Seed Parent: **johannis**

Pollen Parent: ?

OdeanHead 1991

NEOREGELIA 'Yellow Chalice'

Head, O.

1989

cv. of 'Golden Chalice' (F-2) - Odean Head said, "Small plant resembling the parent but with solid yellow color in good light with the red marking but without the golden mottling of the 'Golden Chalice'".

Seed Parent: **Golden Chalice**Pollen Parent: **Golden Chalice**

OdeanHead1998



**TO ALL OUR FCBS MEMBERS
WISHING YOU
AND YOUR FAMILY
A HAPPY THANKSGIVING
A MERRY CHRISTMAS
AND A GREAT
NEW YEAR IN 2023!**

